

WELLNESS®

**gfh**  
HAIR FOR WEAR

WELLNESS®  
CLASSICCOLLECTION





AMELIE  
Seite: 22  
Farbe: 830R



GIVES  
YOU  
BACK  
YOUR  
SMILE!

Titel  
STAR FASCINATION  
Seite: 10  
Farbe: 822R

## WELLNESS® CLASSICCOLLECTION

Die neue WELLNESS®CLASSIC Kollektion inspiriert mit spannenden Haarlösungen, die Ihre Schönheit natürlich betonen und ein rundum sicheres Gefühl geben. Unsere jahrzehntelange Expertise und Erfahrung haben wir in variantenreiche Stylings, perfekte Verarbeitung und ein angenehmes Tragegefühl übersetzt. Natürlich kommen auch aktuelle Trends nicht zu kurz, wie zum Beispiel kinn- und schulterlanges Haar für eine Extraportion moderne Weiblichkeit. **Entdecken Sie die neue Vielfalt!**

Get inspired by the WELLNESS®CLASSIC Collection with its exciting hair solutions that naturally highlight your beauty. It gives you a completely secure feeling. Versatile stylings, perfect finishing and a comfortable wearing are the result of decades of our expert knowledge. Of course we're also keeping up with the latest trends, for example chin- or shoulder-long hair for an extra portion of modern femaleness. **Discover the new diversity!**

La nuova collezione WELLNESS®CLASSIC ispira entusiasmanti soluzioni per capelli che enfatizzano la Vostra bellezza in modo naturale e regalano una sensazione di completa sicurezza. Abbiamo tradotto la nostra decennale esperienza e competenza in una grande varietà di stili, una lavorazione perfetta ed un piacevole comfort. Naturalmente non abbiamo trascurato anche le tendenze attuali, come i capelli lunghi fino al mento o alle spalle, per un supplemento di femminilità moderna. **Scoprite le nuove varietà!**



Yours sincerely,

*C. Hoffmeister-Gizzi*

**gfh**

Cornelia Hoffmeister-Gizzi  
Geschäftsleitung/CEO



UNSICHTBARER

LACE  
FRONT

HAARANSATZ

Farbe: 627R

# AMBITION

★★★★★ LACE

## AMBITION

### Farben/Colours

■ 4/3/2

■ 209, 830/27-6, 30/32

■ 12/26-27, 260R, 627R, 14/101

■ 330R

■ 39/51-39, 60/51

UNSIHTBARER

LACE  
FRONT

HAARANSATZ



Farbe: 132



Farbe: 830R

# NEW COMFORT

★★ LACE

NEW COMFORT

## Farben/Colours



2



4/3/2



109, 209, 30/32



14/24, 14/26-12, 126, 124, 25/20-14



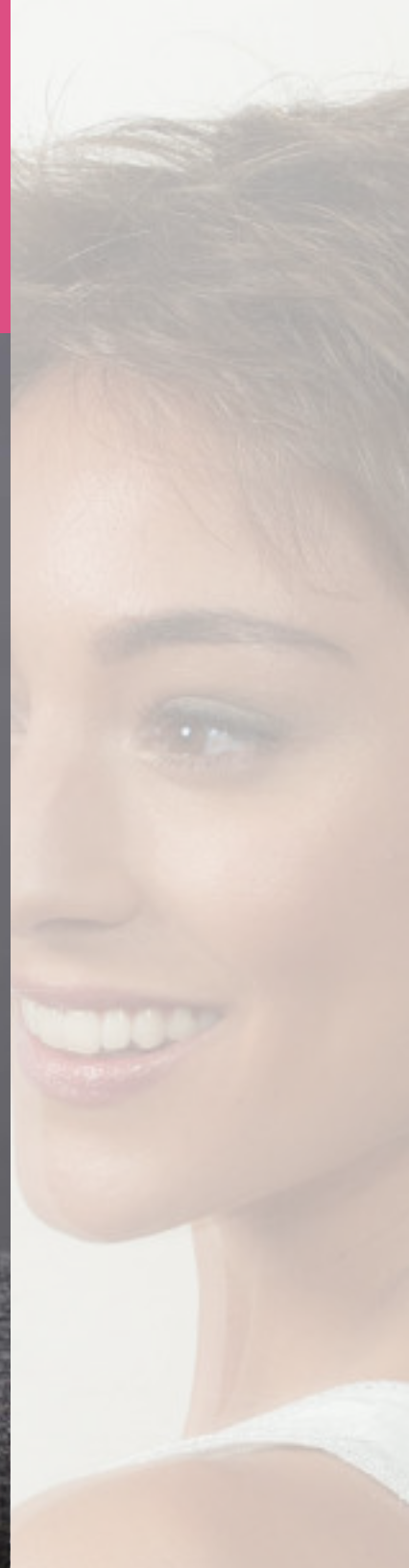
130/33, 132, 830R



39/51-39, 51/60-58, 60



Farbe: 236R



★★★★★ LACE

## EXPRESSION

### Farben/Colours

- |  |   |
|--|---|
|  4/3/2  |  132, 130/33     |
|  109, 209, 30/32                                  |  51/60-58, 60/51 |
|  14/24, 12/26-27, 126,<br>236R, 260R, 124, 14/101 |   |

UNSICHTBARER

LACE  
FRONT

HAARANSATZ

Farbe: 130/33

EXPRESSION

UNSIHTBARER

LACE  
FRONT

HAARANSATZ

TREND S für kleine Köpfe

Size: 52–53 cm  
Suitable for **small**  
head sizes.

TREND M

Size: 54–56 cm  
Suitable for **medium**  
head sizes.

Farbe: 30/32

★★★★★ LACE

TREND IS+MI

TREND S  
Farben/Colours

6/4	309, 124, 613R, 25/20-14
109, 209, 30/32*	130/33
48/38-36, 60/51	

TREND M  
Farben/Colours

2	309, 124, 613R, 25/20-14
6/4	130/33
109, 209, 30/32*	48/38-36, 60/51

\*Solange der Vorrat reicht · While stocks last



UNSIHTBARER

LACE  
FRONT

HAARANSATZ

Farbe: 627R



Farbe: 209

★★★★ LACE

# INTOUCH

## Farben/Colours



6/4



209, 30/32, 109



14/24, 309, 14/26-12, 627R, 25/20-14



130/33



48/38-36



Farbe: 627R

★★★★★ LACE

## STAR FASCINATION

### Farben/Colours

- 4/3/2, 6/30
- 209, 30/32
- 14/24, 309, 627R, 613R, 822R
- 131R
- Platine

# STAR

UNSICHTBARER  
LACE  
FRONT  
HAARANSATZ

Farbe: 822R

# FASCINATION

★★★★★ LACE

## ELEGANCE XL

ELEGANCE XL für große Köpfe



Size: 56 - 58 cm  
Suitable for **large**  
head sizes.

## Farben/Colours

- 109, 209, 30/32
- 14/26-12, 260R, 124
- 132
- 39/51-39, 51/60-58, 60/51

Farbe: 51/60-58

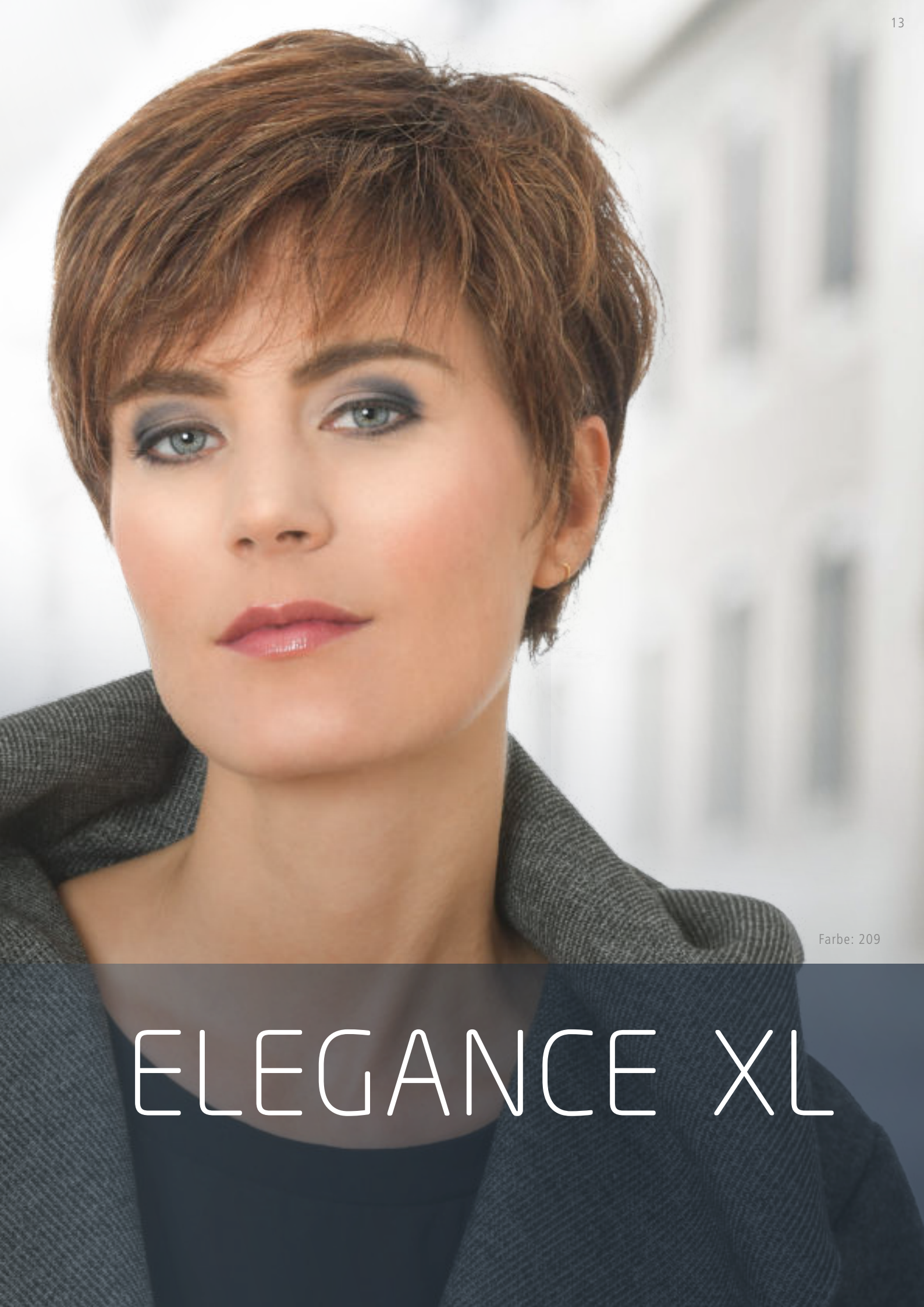


UNSIHTBARER

LACE  
FRONT

HAARANSATZ





Farbe: 209

# ELEGANCE XL



UNSICHTBARER

LACE  
FRONT

HAARANSATZ

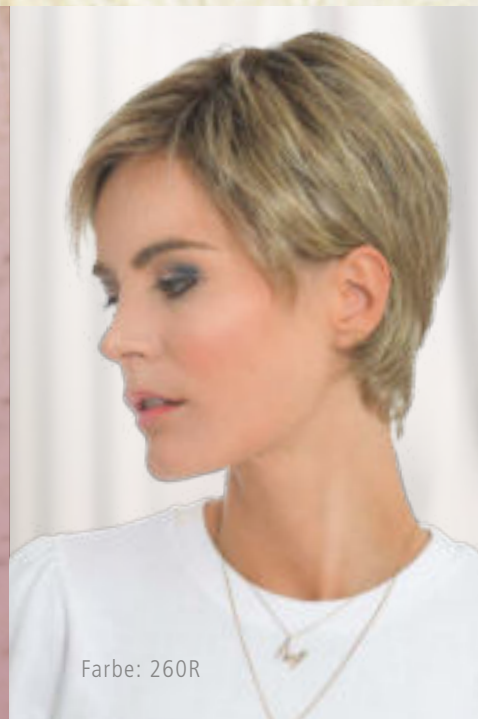
Farbe: 4/3/2

★★★★★ LACE

# DESIREE

## Farben/Colours

 4/3/2	 132
 209, 30/32	 39/51-39, 48/38-36, 60/51
 309, 126, 260R, 14/101	



Farbe: 260R

★★★★★ LACE

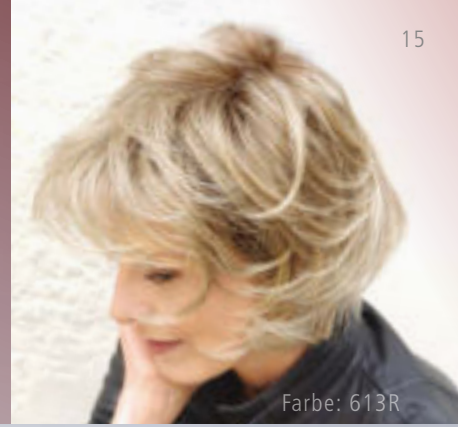
## SERENADE XL

## Farben/Colours

 4/3/2

 260R, 613R

 209, 30/32

 330R


Farbe: 613R

UNSIHTBARER

LACE  
FRONT

HAARANSATZ

SERENADE XL für große Köpfe



Size: 57 - 58 cm  
Suitable for **large**  
head sizes.

Farbe: 330R

SERENADE XL

Farbe: 6/4

UNSICHTBARER

LACE  
FRONT

HAARANSATZ





Farbe: 613R









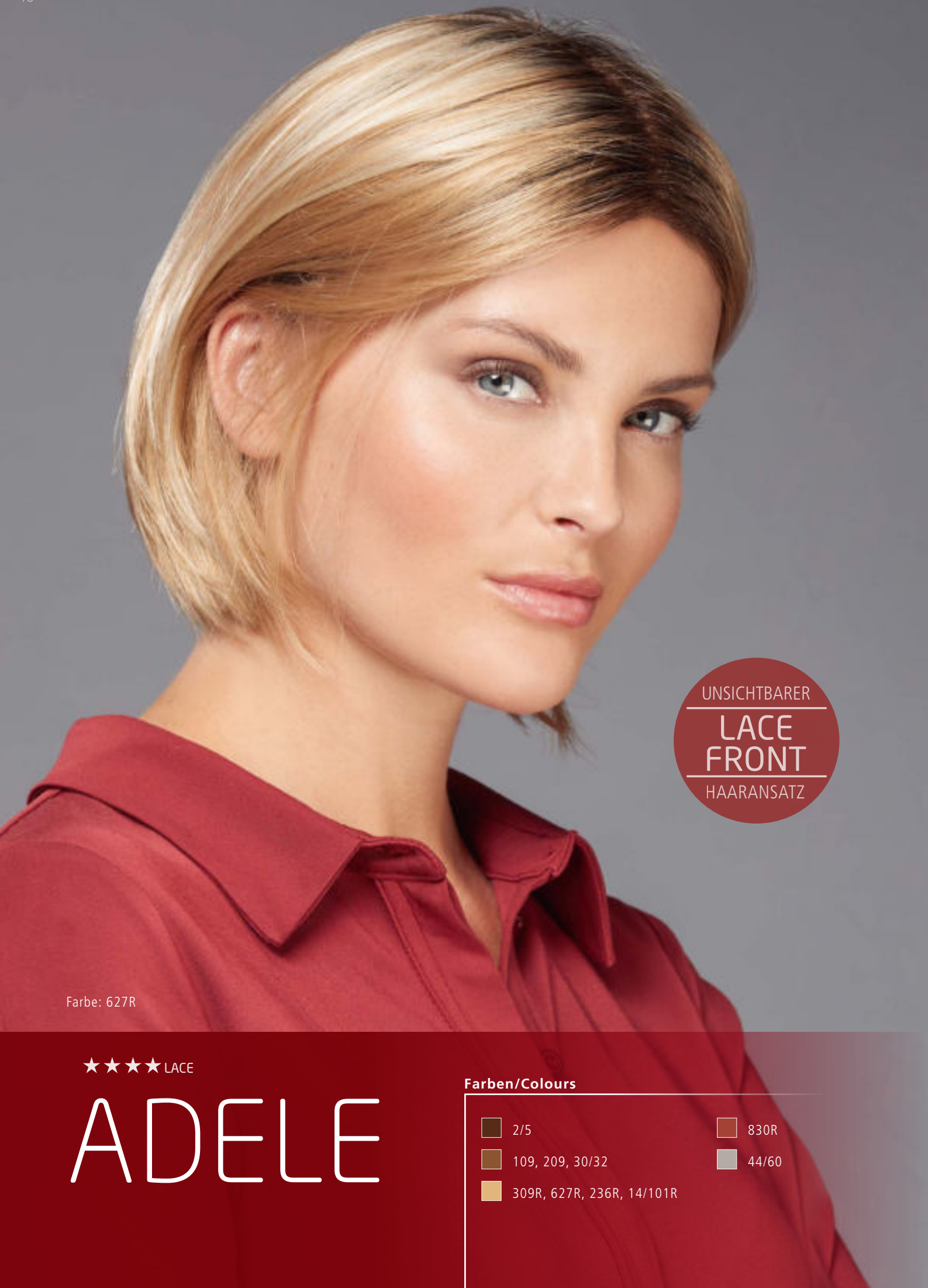
# DELIA

★★★★★ LACE

DELIA

## Farben/Colours

 2	 14/24, 309, 260R, 613R, 124, 25/20-14
 6/4	 130/33
 209, 30/32	 48/38-36, 51/60-58



UNSICHTBARER

LACE  
FRONT

HAARANSATZ

Farbe: 627R

★★★★ LACE

# ADELE

## Farben/Colours

 2/5	 830R
 109, 209, 30/32	 44/60
 309R, 627R, 236R, 14/101R	



Farbe: 830R



Farbe: 613R



# VERA

## Farben/Colours



2



2/5



109, 209, 30/32



309, 14/24, 260R, 613R



131R, 830R



60/51





Farbe: 14/101

#### Farben/Colours



2



309R, 260R, 14/101, 613R, 822R



4/3/2



330R, 830R



209, 30/32, 709R



# FEELING

UNSICHTBARER

LACE  
FRONT





HAARANSATZ

Farbe: 830R

★ LACE

# AMELIE

Farben/Colours

-  2/5
-  209, 30/32, 709R
-  236R, 612R, 14/101R
-  830R



UNSICHTBARER

LACE  
FRONT

HAARANSATZ

Farbe: 822R

★★★★★ LACE

# DIANE

Farben/Colours

- 2/5
- 209, 30/32
- 309R, 627R, 822R
- 330R, 827, 830R

UNSICHTBARER

LACE  
FRONT

HAARANSATZ

Farbe: 130/33

ISAXL





Farbe: 330R  
Individual cut

★★★★★ LACE

ISA XL

ISA XL für große Köpfe



Size: 56–58 cm  
Suitable for **large**  
head sizes.

#### Farben/Colours

- 2/5
- 109, 209, 30/32
- 309, 625R, 126, 613R
- 130/33, 330R
- 60

UNSIHTBARER

LACE  
FRONT

HAARANSATZ

Farbe: 709R

# SPLENDIDE IS+MI

★★ LACE

## SPLENDIDE

### Farben/Colours

- 2/5
- 109, 209, 30/32, 709R
- 309R, 236R, 613R
- 131R, 830R

### SPLENDIDE S für kleine Köpfe



Size: 52–54 cm  
Suitable for **small**  
head sizes.

### SPLENDIDE M



Size: 54–56 cm  
Suitable for **medium**  
head sizes.

UNSICHTBARER

LACE  
FRONT


HAARANSATZ

Farbe: 627R

★ LACE

# ELOUISE

Farben/Colours

- |   |                 |
|---|-----------------|
|  | 109, 209, 30/32 |
|  | 627R, 14/101R   |

UNSIHTBARER

LACE  
FRONT

HAARANSATZ

## PASSION M



Size: 54–56 cm  
Suitable for **medium**  
head sizes.

## PASSION XL für große Köpfe



Size: 57–59 cm  
Suitable for **large**  
head sizes.

Farbe: 14/24

★★★ LACE

## PASSION IM+XLI

## Farben/Colours



4/3/2



309, 14/24, 260R, 25/20-14



109, 30/32, 6/27 Ombré



131R, 330R

UNSICHTBARER

LACE  
FRONT

HAARANSATZ

Farbe: 6/27 Ombré

★★★★ LACE

# SPRING

Farben/Colours

- 2
- 4/3/2
- 109, 209, 30/32, 6/27 Ombré
- 309, 260R, 124, 613R
- 30/31-30R

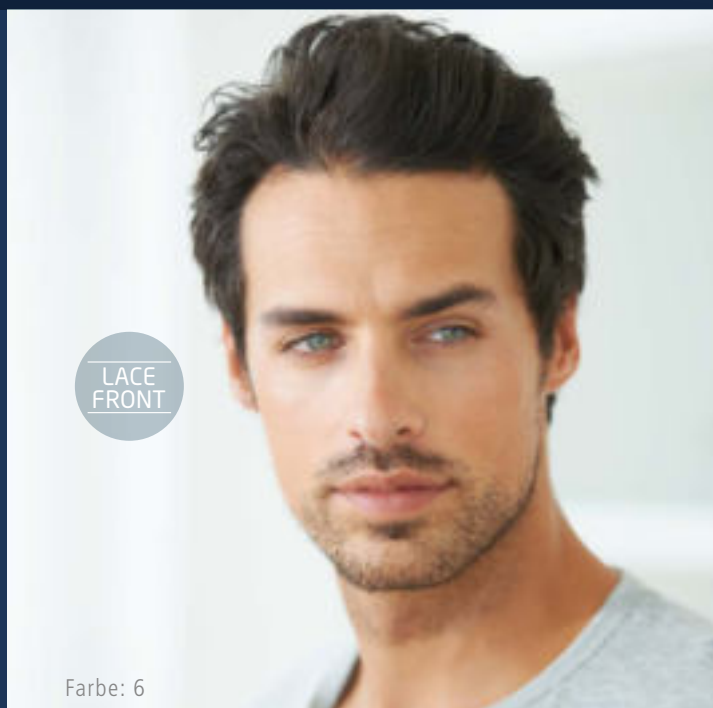
# MEN

TOP SECRET®

Ob in Echthaar oder Kunsthaar – Perücken von **TOP SECRET®** bieten eine individuelle und typgerechte Zweithaar-Lösung.

No matter if its human hair or synthetic fibre – wigs from **TOP SECRET®** offer you an individual and type concerned solution with hair pieces.

Che si tratti di capelli naturali o sintetici, le parrucche di **TOP SECRET®** offrono una soluzione individuale e personalizzata per ogni tipo di esigenza.



Farbe: 6

★★★★★ LACE

MEDIMAN STRETCH **Echthaar**

Größe: 57 cm, Mono-Top, handgeknüpft

Größe: 59 cm, Mono-Top, handgeknüpft



## CAPCOLLECTION

Entdecken Sie unsere men's **CAPCOLLECTION** und bieten Sie Ihren Kunden Caps der Extraklasse, ob sportlich, funktionell oder klassisch-chic.

Discover our men's **CAPCOLLECTION** and offer your clients top-class caps, whether you want it sporty, functional or classically chic.

Scoprite la nostra **CAPCOLLECTION** da uomo e offrite ai Vostri clienti cappelli premium, sportivi, funzionali o classico-chic.

UNSICHTBARER

LACE  
FRONT

HAARANSATZ

Farbe: 37C

★ LACE

MEDISPORT Synthetik-  
faser

Größe: 56-58 cm, Mono-Top, Tressen

INFOS:

+49 (0) 911 974 923-0

info@gfh-hair.de | www.gfh-hair.de

# EYEBROWS AND EYELASHES

> [www.gfh-hair.de/Seiten/wimpern.html](http://www.gfh-hair.de/Seiten/wimpern.html)

Das WELLNESS®-Augenbrauen-Sortiment bietet eine besonders natürlich wirkende, unauffällige Nachbildung aus 100 % Echthaar.

The WELLNESS® eyebrow range offers extremely natural looking, discreet imitations made from 100% real hair.

La gamma di sopracciglia WELLNESS® offre una riproduzione in veri peli al 100% dall'effetto particolarmente naturale e discreto.

Mit den feinen WELLNESS®-Wimpern und Echthaar-Augenbrauen können Sie auch zu Hause ganz unauffällig und natürlich die fehlenden Haare ergänzen.

Touch up on missing hairs at home with our beautiful WELLNESS® eyelashes and real hair eyebrows - discreetly and naturally.

Grazie alle sottili ciglia WELLNESS® e alle sopracciglia di peli naturali potrete integrare le zone meno folte in maniera completamente naturale e non invasiva anche a casa.



Jetzt auch in **XL** erhältlich!  
Now available in **XL** too!  
Ora disponibile in **XL** anche!



# EYEBROW MAKE-UP

> [www.gfh-hair.de/Christian\\_augebrauen-makeup/augebrauen-makeup.html](http://www.gfh-hair.de/Christian_augebrauen-makeup/augebrauen-makeup.html)

Eine speziell entwickelte und problemlos anzuwendende Schablonen-Technik verhilft zu natürlich schönen Ergebnissen mit dem semi-permanenten Augenbrauen-Make-up von Christian Faye®.

A specially developed and easy to use stencil technique helps you to produce naturally beautiful results using the semi-permanent eyebrow make-up from Christian Faye®.

Una tecnica a sagome specificamente sviluppata e applicabile in tutta semplicità aiuta a ottenere risultati naturalmente belli con il make-up semipermanente per sopracciglia di Christian Faye®.





# CAPCOLLECTION

> [www.gfh-hair.de/Seiten/turbans\\_portal.html](http://www.gfh-hair.de/Seiten/turbans_portal.html)

Ob locker-leicht in den Sommer oder kuschelig-warm in den Winter – mit unserer CAPCOLLECTION sind Ihre Kunden für jede Jahreszeit bestens gekleidet. Jedes Teil wählen wir stets mit Liebe, Sorgfalt und höchstem Qualitätsanspruch aus.



Whether it's loose and light in the summer or cosy and warm in the winter – with our CAPCOLLECTION your customers are well dressed at any time of the year. We always choose each piece with love, care and the highest quality requirements.

Rilassati e leggeri in estate oppure avvolgenti e caldi in inverno – con la nostra CAPCOLLECTION i vostri clienti saranno abbigliati al meglio in ogni stagione. Ogni pezzo è selezionato con amore, accuratezza e con le massime pretese in termini di qualità.

INFOS:

+49 (0) 911/9749230

[info@gfh-hair.de](mailto:info@gfh-hair.de) | [www.gfh-hair.de](http://www.gfh-hair.de)

## ACTIV

> [www.gfh-hair.de/haircare](http://www.gfh-hair.de/haircare)

Zweithaar-Pflege für Glanz und bessere Kämmbarkeit.

Haircare for more gloss and easy combing.

Prodotti specifici per la cura delle parrucche per una maggiore lucentezza e migliore pettinabilità.

Die ACTIV Haircare Pflegeserie ist speziell auf Kunsthaar abgestimmt und gibt Ihrem Haarsersatz maximale Pflege. Ohne Parabene sind die neuen Pflegeprodukte der GFH gleichermaßen umwelt- und hautfreundlich und pflegen auf natürliche Art. Das Ergebnis: bessere Kämmbarkeit sowie mehr Glanz – einfach schönes Haar.

The ACTIV Haircare series is especially adjusted to synthetic fibre and provides your hair piece maximum care. Without parabens, the new GFH haircare products are equally environmental and skin-friendly with natural care. The result: easy combing and more gloss – just beautiful hair.

La gamma di prodotti ACTIV Haircare è appositamente elaborata per i capelli in fibra sintetica ai quali fornisce la massima cura. Privi di parabeni, i nuovi prodotti della GFH sono in egual misura rispettosi dell'ambiente e della pelle e agiscono in modo del tutto naturale. Risultato: una migliore pettinabilità e più lucentezza – semplicemente capelli più belli.





UNSICHTBARER

LACE  
FRONT

HAARANSATZ

AMBITION  
Seite: 4  
Farbe: 4/3/2

# LACE FRONT

BEWÄHRTER KLASSIKER IN DER  
WELLNESS® CLASSICCOLLECTION:

Perücken mit **LaceFront** lassen den Haaransatz auf der Stirn vollkommen natürlich wirken. Sie können Ihre Haare nach hinten kämmen, ohne Angst zu haben, dass die Perücke erkannt wird. Bei Wellness-Modellen sind auch die Seiten und Tempeln mit **LaceFront** ausgestattet. Dadurch verbessern sich die Frisurmöglichkeiten und die Tragesicherheit zusätzlich.

**LaceFront** basiert auf einem transparenten Tüll, der bereits seit vielen Jahren von Maskenbildnern für Film und Theater eingesetzt wird. Perückenhersteller können damit absolut echt erscheinende Ansätze knüpfen.

Für den alltäglichen Einsatz musste das feine Tüllgewebe strapazierfähiger gemacht werden. In Zusammenarbeit mit der Schweizer Tüllindustrie wurden daher Tüllarten entwickelt, die zugleich fein, transparent und haltbar sind. Die Lösung lag in einer Ultrasonic-Verschweißung, bei der die Gewebestruktur mit Ultraschall fixiert wird. Häufiges Auf- und Absetzen der Perücke ist mit **LaceFront** völlig unproblematisch.

# LACE FRONT

THE TRIED AND TESTED CLASSIC IN  
THE WELLNESS® CLASSICCOLLECTION:

Wigs with **LaceFront** ensure a natural looking hairline. You can comb your hair back without people realising you are wearing a wig. The sides and temples of the Wellness models are also equipped with a lace front. This additionally increases the variety of hairstyles, while offering a comfortable and secure fit.

**LaceFront** is based on a transparent net lace which has been a firm favourite with film and theatre make-up artists for many years. Wig manufacturers can thus achieve natural looking hairlines.

However, the fine netting material must be adapted to today's use. Therefore, fine, transparent and durable nets have been developed in cooperation with the Swiss net industry. The solution was the ultrasonic welding of the fabric structure. **LaceFront** guarantees that the wig can be put on and taken off as often as you like.

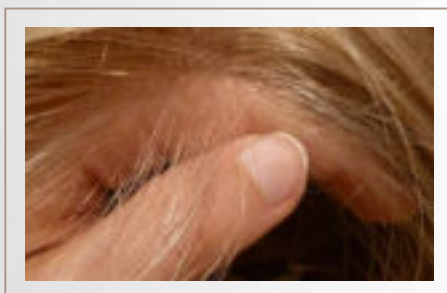
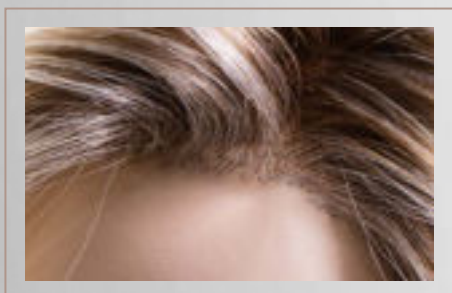
# LACE FRONT

APPREZZATI CLASSICI NELLA  
WELLNESS® CLASSICCOLLECTION:

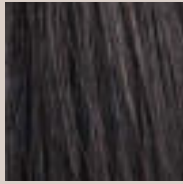
Le parrucche con **LaceFront** fanno sì che l'attaccatura dei capelli sulla fronte risulti completamente naturale. Potete pettinare i capelli all'indietro, senza temere che si riconosca la parrucca. Nei modelli Wellness, anche i lati sono dotati di **LaceFront**. In questo modo migliorano ulteriormente le possibilità di acconciare i capelli e la sicurezza nell'indossare la parrucca.

Il concetto di LaceFront si basa su un tulle trasparente che viene utilizzato già da molti anni dai truccatori per il cinema e il teatro. Con questo, i produttori di parrucche possono intrecciare attaccature dall'aspetto assolutamente realistico.

Per poter essere utilizzato quotidianamente, questo tulle doveva essere reso più resistente. In collaborazione con la Schweizer Tüllindustrie sono quindi stati realizzati dei tipi di tulle che sono al contempo fini, trasparenti e durevoli. La soluzione è stata trovata in una saldatura ultrasonica nella quale la struttura del tessuto viene fissata con gli ultrasuoni. Mettere e togliere frequentemente la parrucca, con **LaceFront**, non dà il minimo problema.



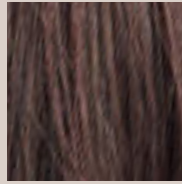
BROWN



Nr. 2



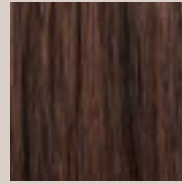
Nr. 2/5



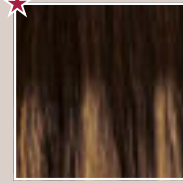
Nr. 4/3/2



Nr. 6/4



Nr. 6/30



Nr. 6/27 Ombré



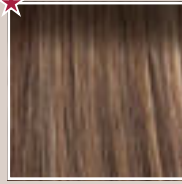
Nr. 30/32



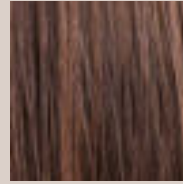
Nr. 109



Nr. 209



Nr. 709R



Nr. 830/27-6



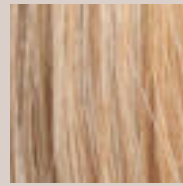
Nr. 14/24



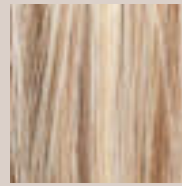
Nr. 14/26-12



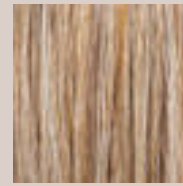
Nr. 14/101



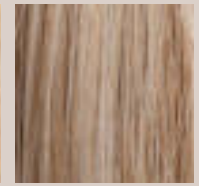
Nr. 126



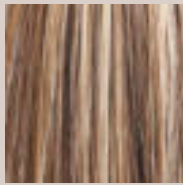
Nr. 124



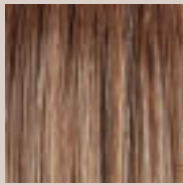
Nr. 12/26-27



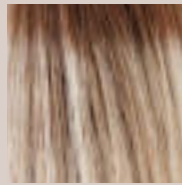
Nr. 25/20-14



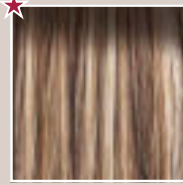
Nr. 309



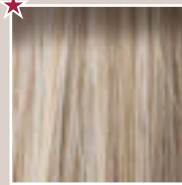
Nr. 627R



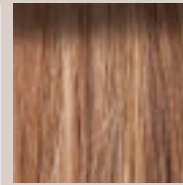
Nr. 613R



Nr. 309R



Nr. 14/101R



Nr. 236R



Nr. 260R



Nr. 625R

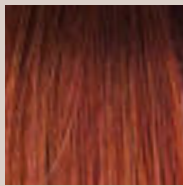


Nr. 612R

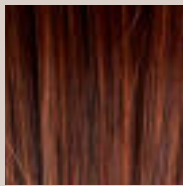


Nr. 822R

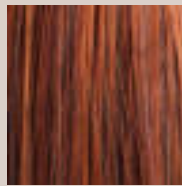
BLOND



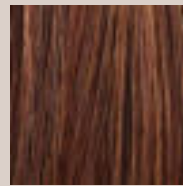
Nr. 330R



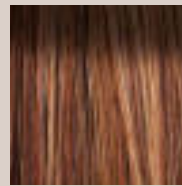
Nr. 131R



Nr. 130/33



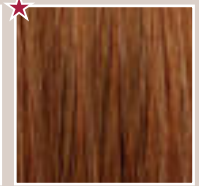
Nr. 132



Nr. 30/31-30R



Nr. 830R



Nr. 827

RED



Nr. 39/51-39



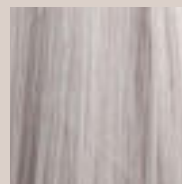
Nr. 48/38-36



Nr. 51/60-58



Nr. 60/51



Nr. 60



Nr. 44/60



Nr. Platine

GREY

NEUE FARBEN  
NEW COLOURS  
NUOVI COLORI

Wählen Sie  
Ihre  
typgerechte  
Farbe!

Select the  
colour for  
your personal  
style!

Scegliete il  
colore che fa  
per voi!



# MONTUREN



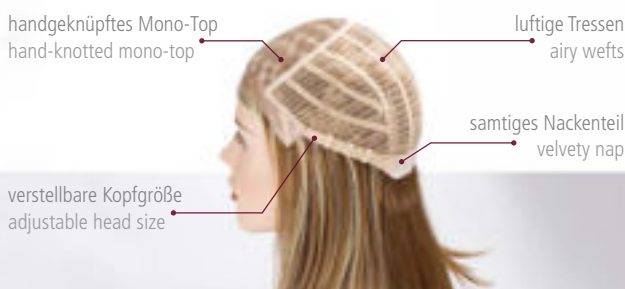
The star classification helps you understand the different cap categories.



MONO-TOP / MONO-TOP  
100 % handgeknüpft – hand-knotted



SOFTMONTUR / SOFT CAP  
100 % handgeknüpft – hand-knotted



MONO-TOP + TRESSE  
MONO-TOP + WEFTS



MONO-SCHEITEL / MONO-PARTING



MONO-TOP / MONO-TOP  
100 % handgeknüpft – hand-knotted



SOFTMONTUR / SOFT CAP  
100 % handgeknüpft – hand-knotted



MONO-TRESSE / MONO-WEFTS



SOFTMONTUR-TRESSE  
SOFT CAP + WEFTS



MONO-SCHEITEL / MONO-PARTING



PASSION  
Seite: 28  
Farbe: 14/24

Ihr Zweithaar-Spezialist berät Sie gerne individuell:  
Your personal hair specialist will gladly advise you:

**gfh**  
HAIR FOR WEAR

gesellschaft für haarästhetik mbh  
Heinrich-Stranka-Straße 16  
D-90765 Fürth bei Nürnberg

Telefon +49 (0) 911 974 923-0  
Telefax +49 (0) 911 974 923-57

info@gfh-hair.de  
www.gfh-hair.de